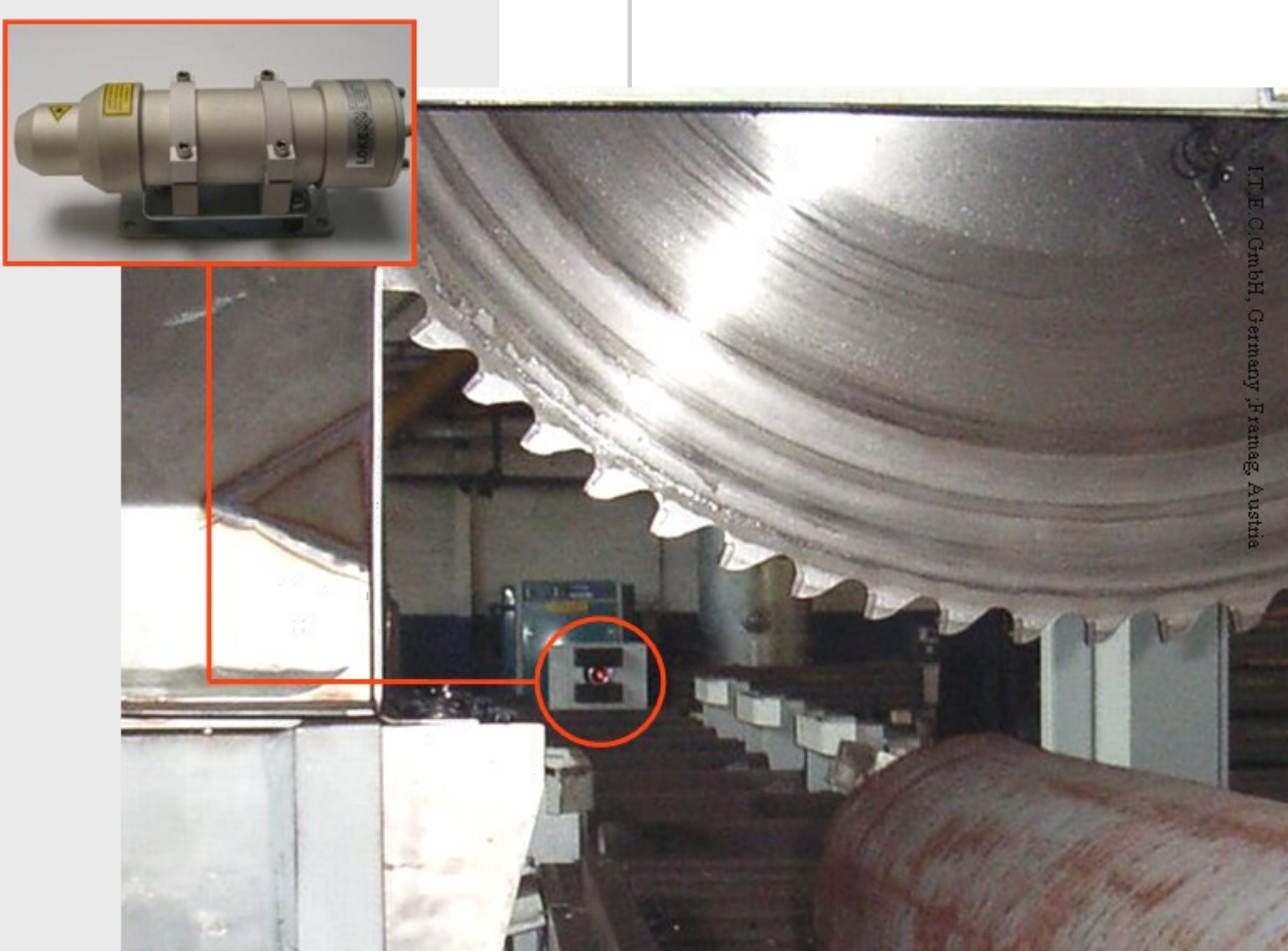
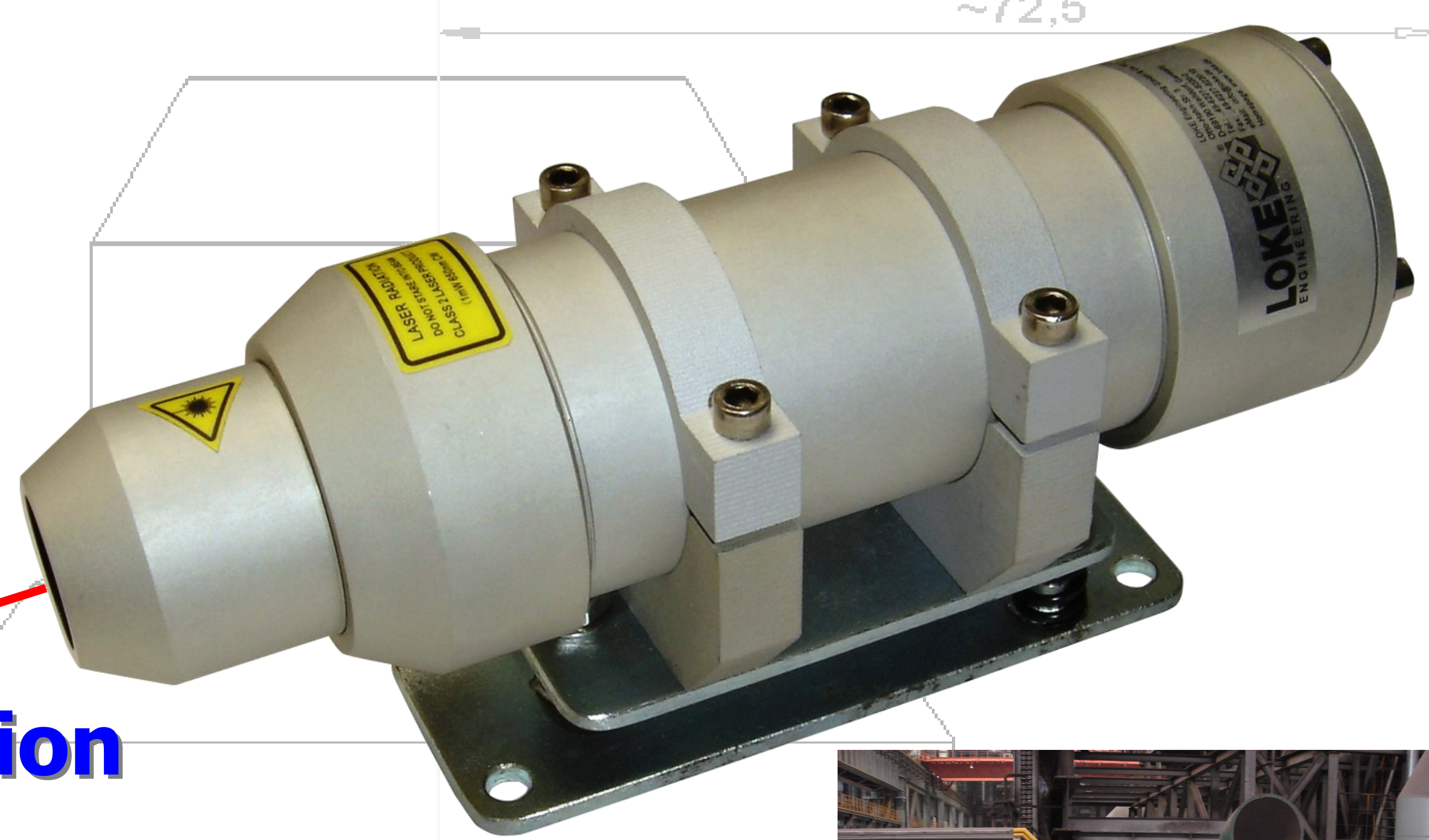




LMC-J-0050 Series Laser Distance Sensor

- Sensor as modular system
- Class 2 laser for eye safe operation
- Reflector less measurement
- Measuring distances with millimeter accuracy
- Measurement output rate up to 100Hz
- Accurate positioning
- Motion detection / Contour detection, Level gauging
- Different Interfaces available like 4..... 20mA, RS232/422, ProfiBus, Ethernet TCP/IP, WLAN etc., digital out
- Dust and waterproof according to IP 66
- Reduced power consumption
- Compact housing
- Wide application spectrum
- Measures surfaces up to 1200°C



ProfilIST – Length, Width, Thickness Measurement Systems

